

## LED-W LG LAAF 130“

### System for wall mounting

HAGOR's LED complete systems have been specially pre-configured for common cabinet types from selected manufacturers, e.g. Unilumin, LG, Samsung or Infiled.

The coordinated mounting modules, based on HAGOR and comPROnents components, offer solid technology to create all conceivable LED video wall substructures.

The LED complete systems are available as a wall-mounting solution, mobile solution, floor-wall mounting or motorised height-adjustable lift systems.

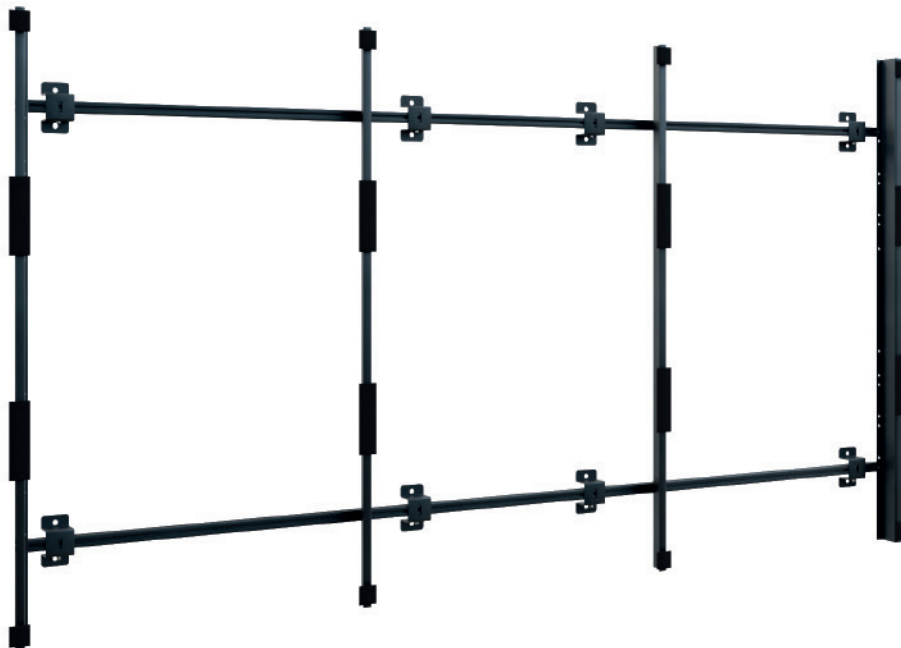
The high-quality design of the aluminium and steel surfaces is enhanced by an impact and scratch resistant and also solvent free powder coating.

**Item no.: 6245**

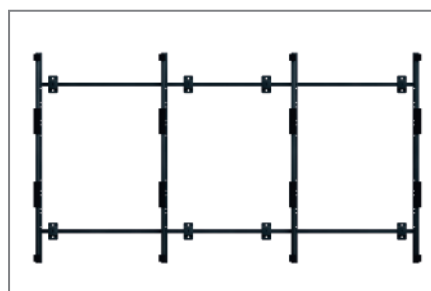
Sophisticated cable management along the support elements ensure a clean appearance, quick assembly and easy maintenance.

The simple modular elements make assembly quick and uncomplicated. The fully compatible components can also be easily extended if required.

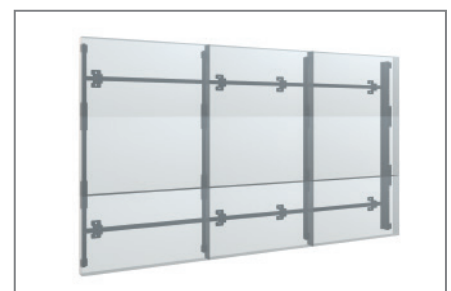
In addition to the pre-configured systems, HAGOR offers customised special solutions in the LED sector, which can be individualised with accessories such as loudspeakers, controls and so on to meet all requirements.



Fine adjustment possible on three axes



8 wall mounting points for stable support



Mount invisible behind the devices

## LED-W LG LAAF 130"

### System for wall mounting

**Item no.: 6245**

- |  |  |
|--|--|
| <ul style="list-style-type: none"><li>• Wall mount suitable for LG LAAF 130"</li><li>• Incl. eight wall mounting points</li><li>• Fine adjustment possible on three axes (X, Y and Z axis)</li><li>• Fine adjustment <math>\pm 8</math> mm</li><li>• Quick and easy installation</li></ul> | <ul style="list-style-type: none"><li>• Can be extended on request</li><li>• Colour: black</li></ul> |
|--|--|

